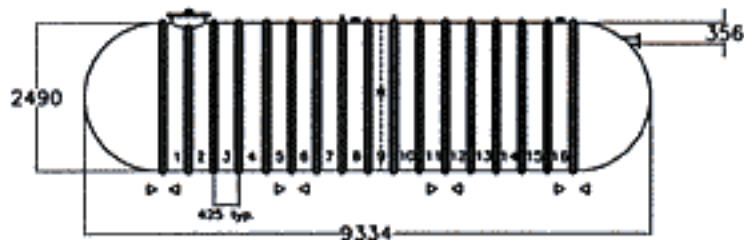
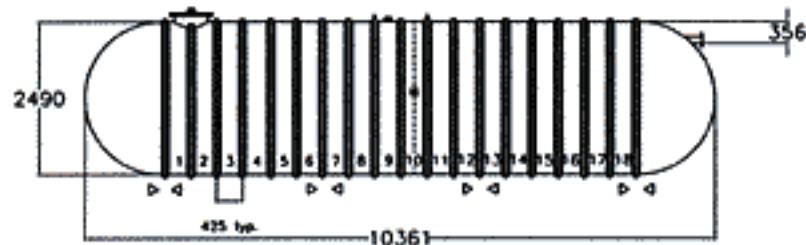


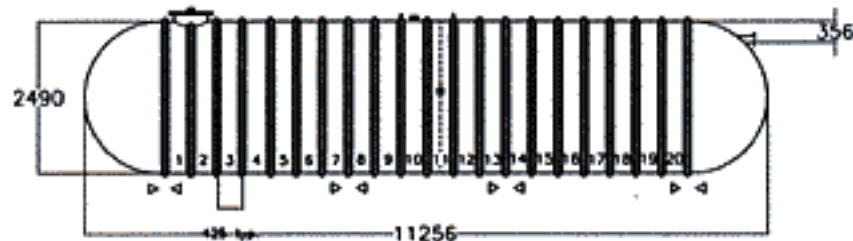
ALL DIMENSIONS ARE IN mm UNLESS OTHERWISE NOTED	SCALE:	SHEET:	DRAWN:	DATE:	TITLE: Z40SW - 3,850 L SINGLE COMP. TWO CHAMBER SEPTIC TANK/EFFLUENT TANK		PHONE: 1-800-661-8265 FAX: 1-780-466-6126
	N.T.S.	1 of 1	LJB	AUG 08/00			
AUTHORIZED TO PROCEED WITH CONSTRUCTION	DRAWING NO.:		APPD:	DATE:			
BY _____ DATE _____	M/E/6510.0						
	DATE:	REVISION:					



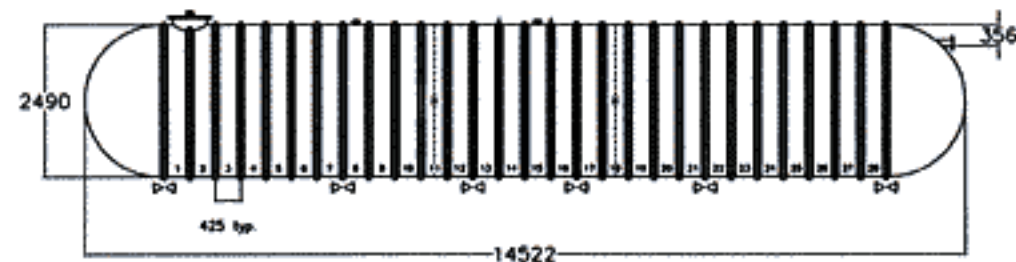
Model: Z86ST40000EC
Working Capacity: 37700 litres



Model: Z86ST45000EC
Working Capacity: 42200 litres



Model: Z86ST50000EC
Working Capacity: 46200 litres



Model: Z86ST65000EC
Working Capacity: 60300 litres

- indicates lift lug
- P-Q indicates anchor point
- No fitting this location

Specify depth of burial 7' / 11'

NOTE: All dimensions are in mm unless otherwise noted.

Dimensional Data

Z86ST Sewage Holding Tanks
End Inlet Configuration
Sheet 2

ZCL
COMPOSITES INC.

PHONE: 1-800-661-8265

FAX: 1-780-466-6126

Dwg No.: Reference

Date: 06/2000